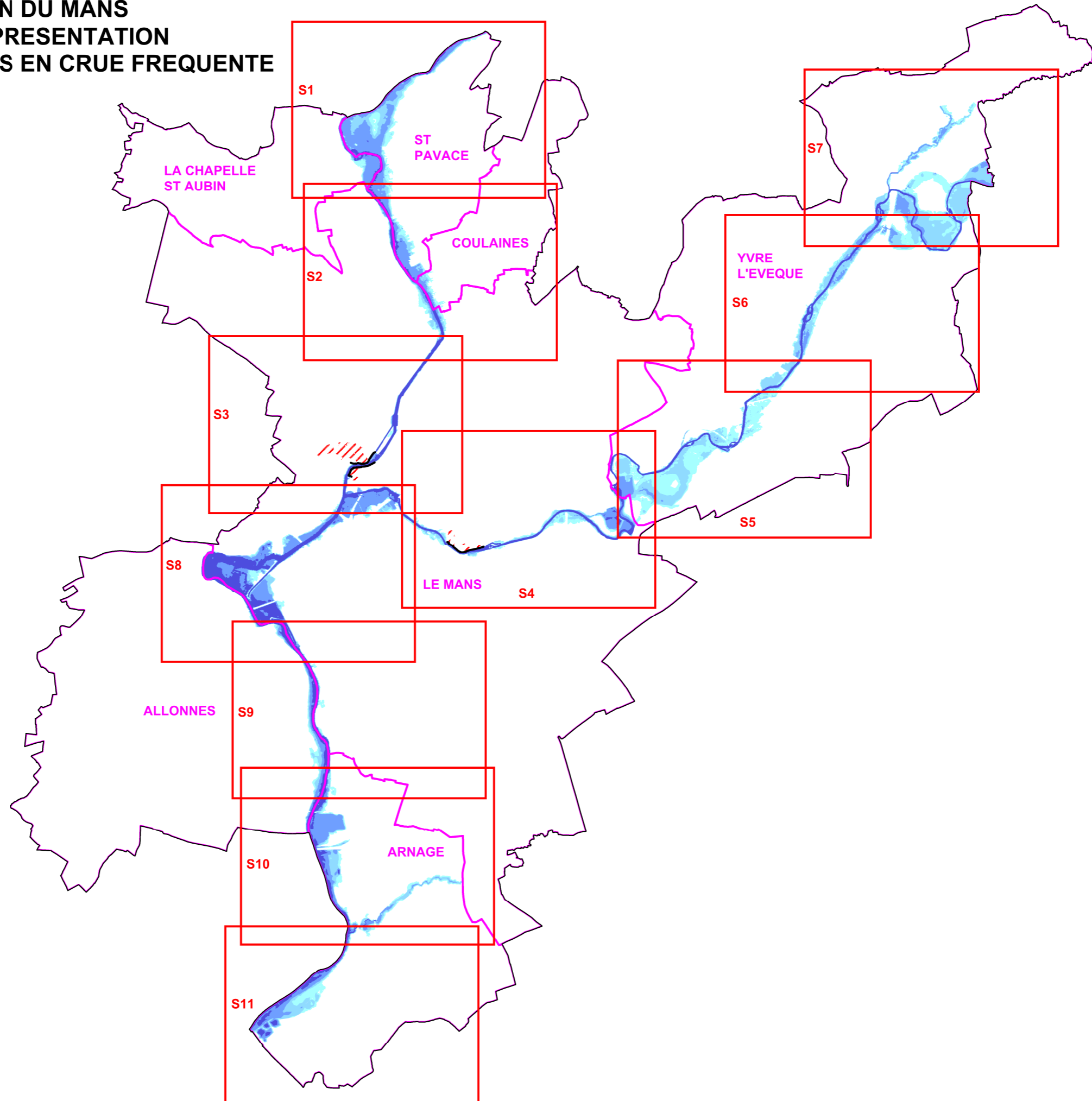


**PPRI DE L'AGGLOMERATION DU MANS
ANNEXE AU RAPPORT DE PRESENTATION
CARTOGRAPHIE DES ALEAS EN CRUE FREQUENTE
VERSION APPROBATION**



ALEAS CRUE FREQUENTE


Secteur 01


Éléments de repérage


 Limites communales


 Dignes


Classes de hauteur d'eau


 Aléa faible : submersion < 0,5 m

 Aléa modéré : 0,5 m < Submersion < 1 m

 Aléa fort : 1 m < Submersion < 2 m

 Aléa très fort : Submersion > 2 m

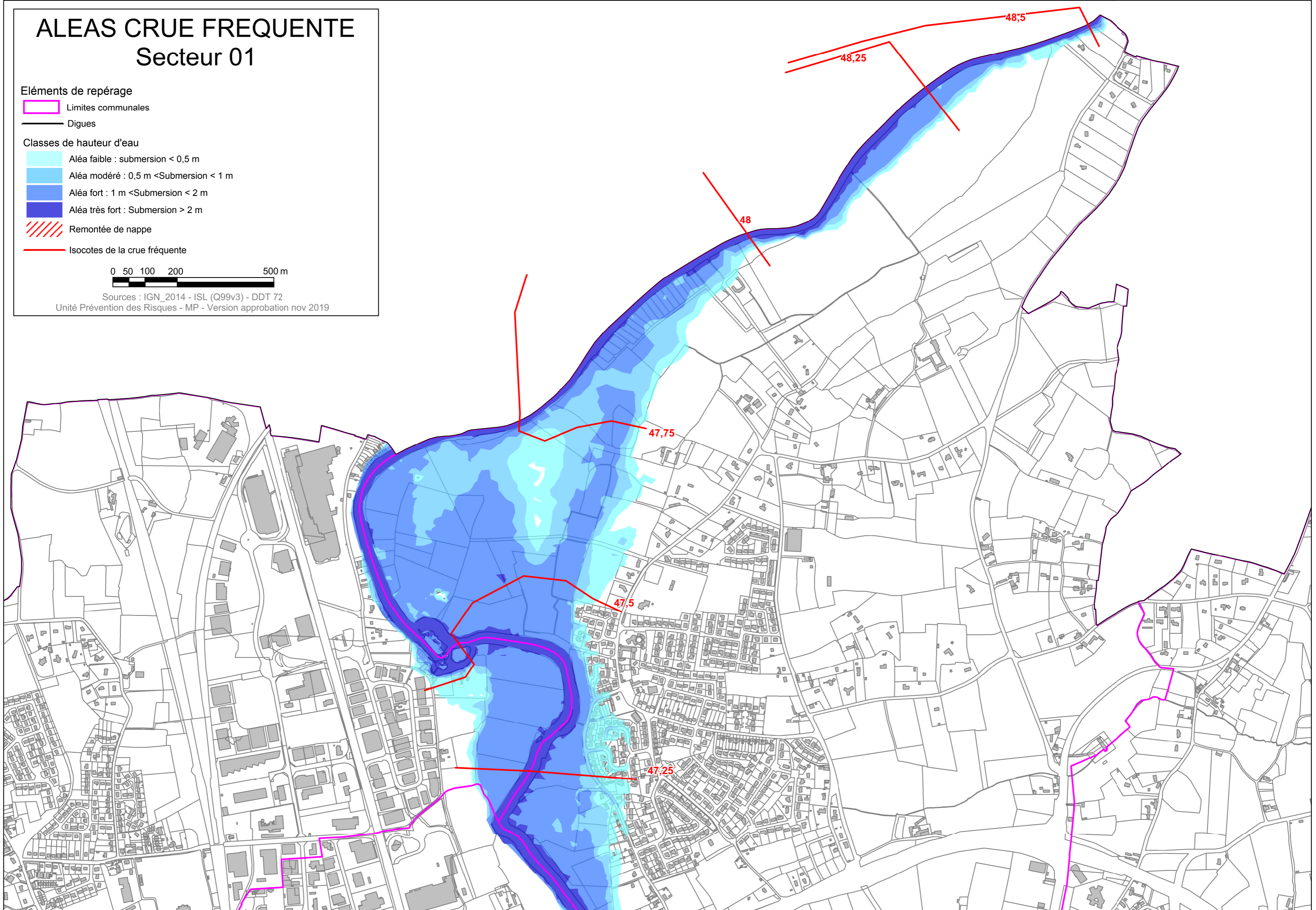
 Remontée de nappe

 Isocotes de la crue fréquente

0 50 100 200 500 m





Sources : IGN_2014 - ISL (Q99v3) - DDT 72
Unité Prévention des Risques - MP - Version approbation nov 2019



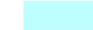



ALEAS CRUE FREQUENTE



Secteur 02

Éléments de repérage

-  Limites communales
-  Dignes

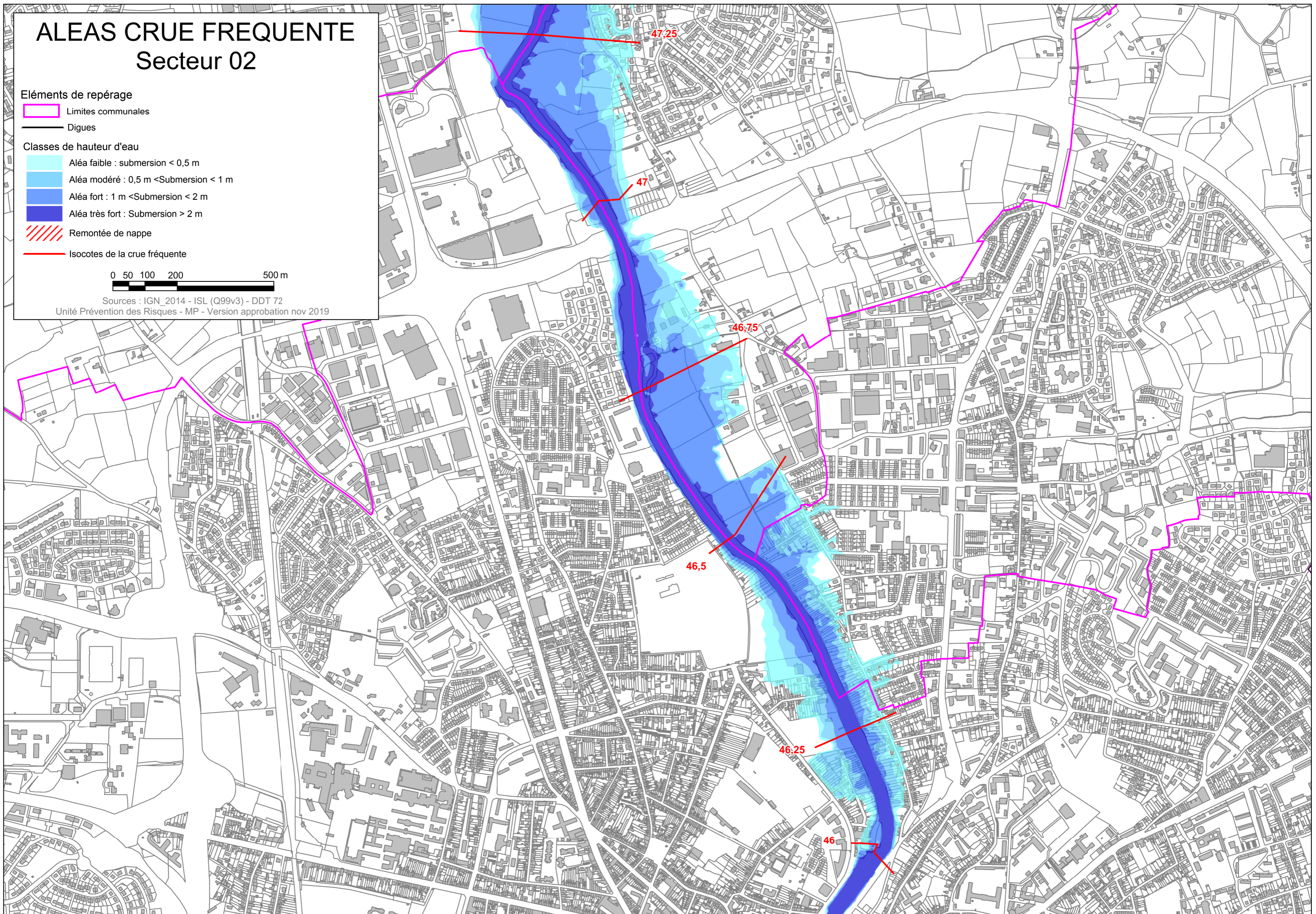
Classes de hauteur d'eau

-  Aléa faible : submersion < 0,5 m
-  Aléa modéré : 0,5 m < Submersion < 1 m
-  Aléa fort : 1 m < Submersion < 2 m
-  Aléa très fort : Submersion > 2 m

-  Remontée de nappe
-  Isocotes de la crue fréquente



Sources : IGN_2014 - ISL (Q99v3) - DDT 72
Unité Prévention des Risques - MP - Version approbation nov 2019



ALEAS CRUE FREQUENTE

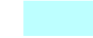
Secteur 03


Éléments de repérage


 Limites communales


 Digues

Classes de hauteur d'eau


 Aléa faible : submersion < 0,5 m

 Aléa modéré : 0,5 m < Submersion < 1 m

 Aléa fort : 1 m < Submersion < 2 m

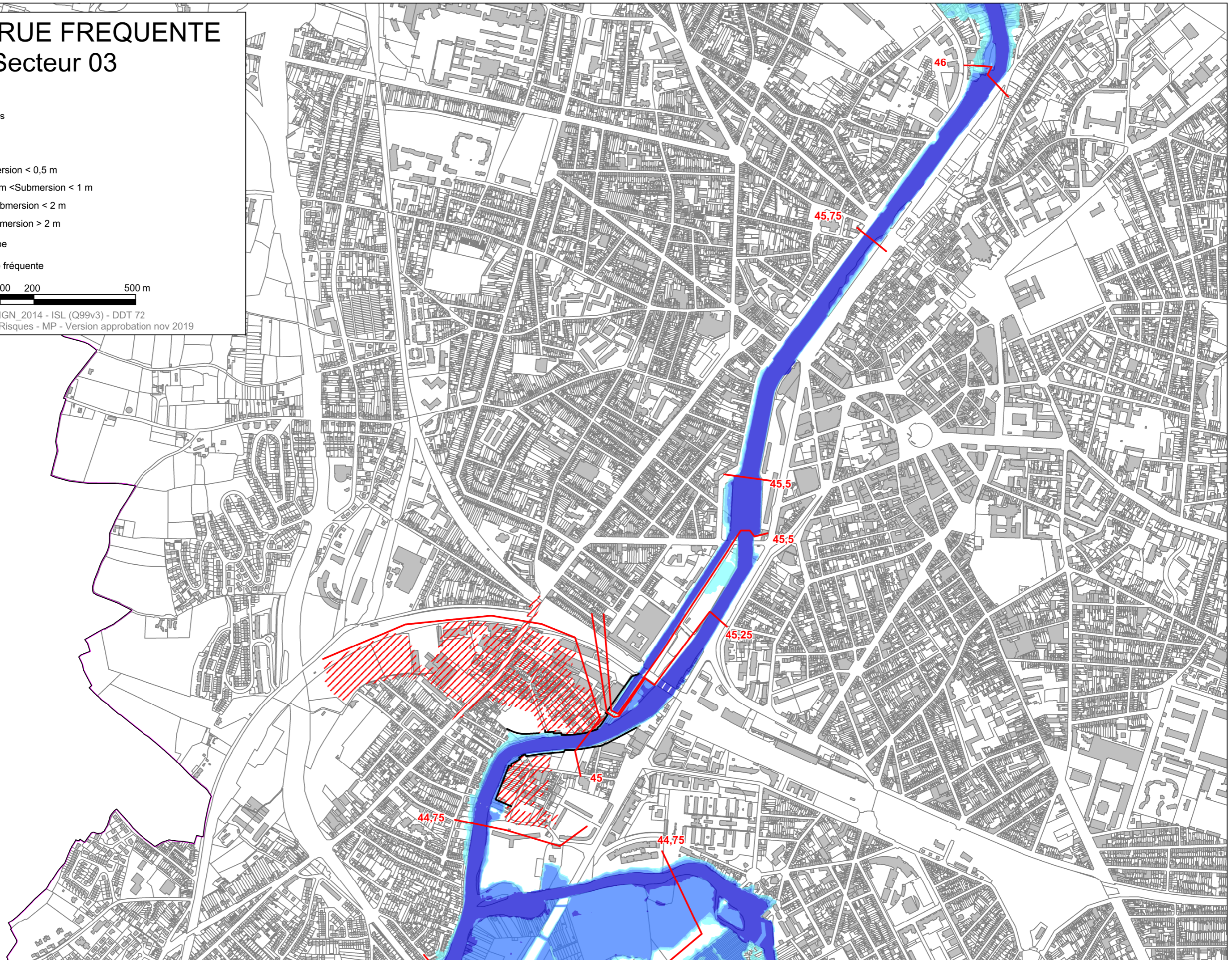
 Aléa très fort : Submersion > 2 m

 Remontée de nappe

 Isocotes de la crue fréquente



Sources : IGN_2014 - ISL (Q99v3) - DDT 72
Unité Prévention des Risques - MP - Version approbation nov 2019



ALEAS CRUE FREQUENTE

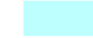
Secteur 04


Eléments de repérage


 Limites communales


 Dignes

Classes de hauteur d'eau


 Aléa faible : submersion < 0,5 m

 Aléa modéré : 0,5 m < Submersion < 1 m

 Aléa fort : 1 m < Submersion < 2 m

 Aléa très fort : Submersion > 2 m

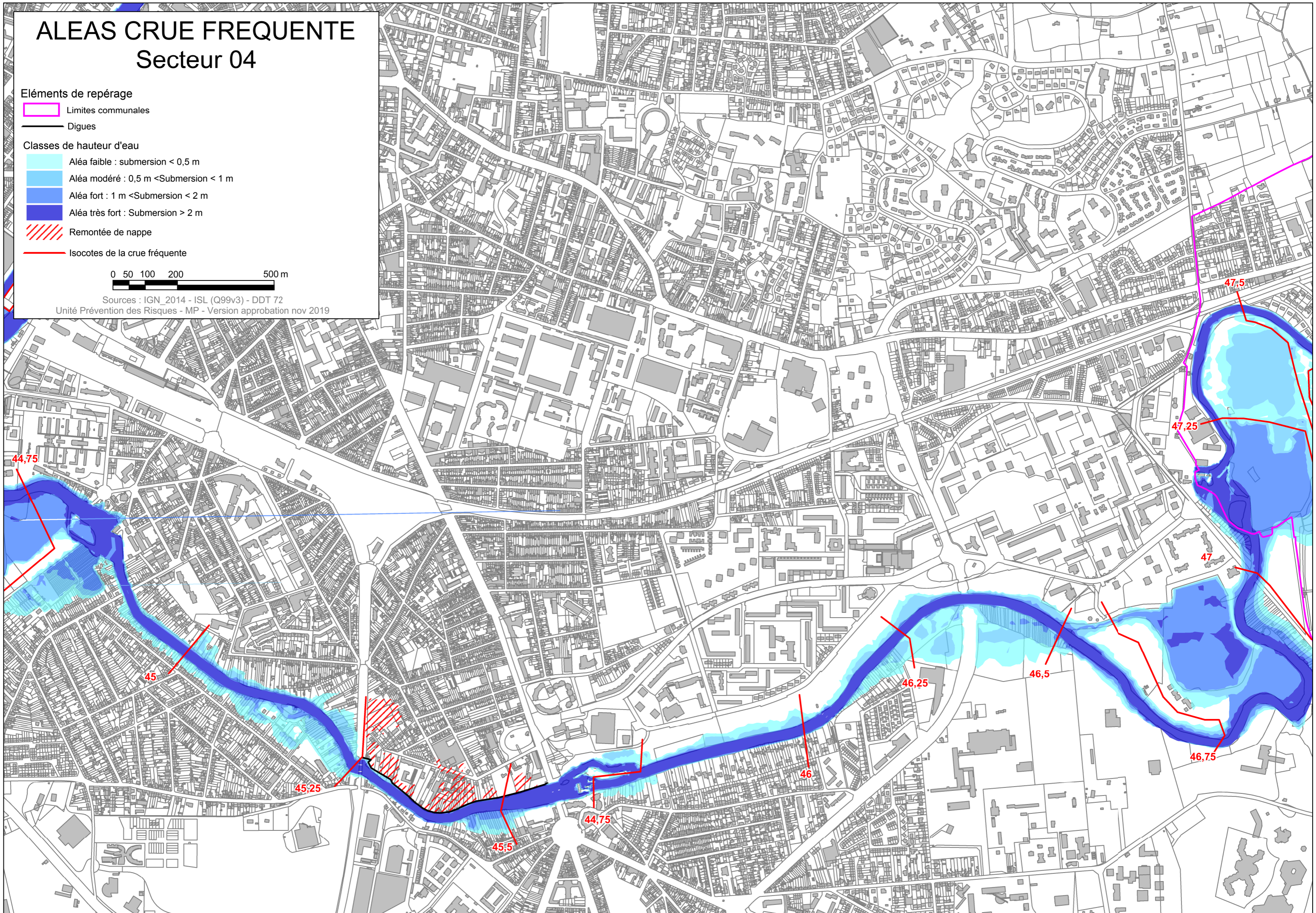
 Remontée de nappe

 Isocotes de la crue fréquente

0 50 100 200 500 m

Sources : IGN_2014 - ISL (Q99v3) - DDT 72

Unité Prévention des Risques - MP - Version approbation nov 2019




ALEAS CRUE FREQUENTE

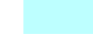
Secteur 05

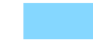
Éléments de repérage

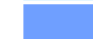
 Limites communales


 Digues


Classes de hauteur d'eau


 Aléa faible : submersion < 0,5 m

 Aléa modéré : 0,5 m < Submersion < 1 m

 Aléa fort : 1 m < Submersion < 2 m

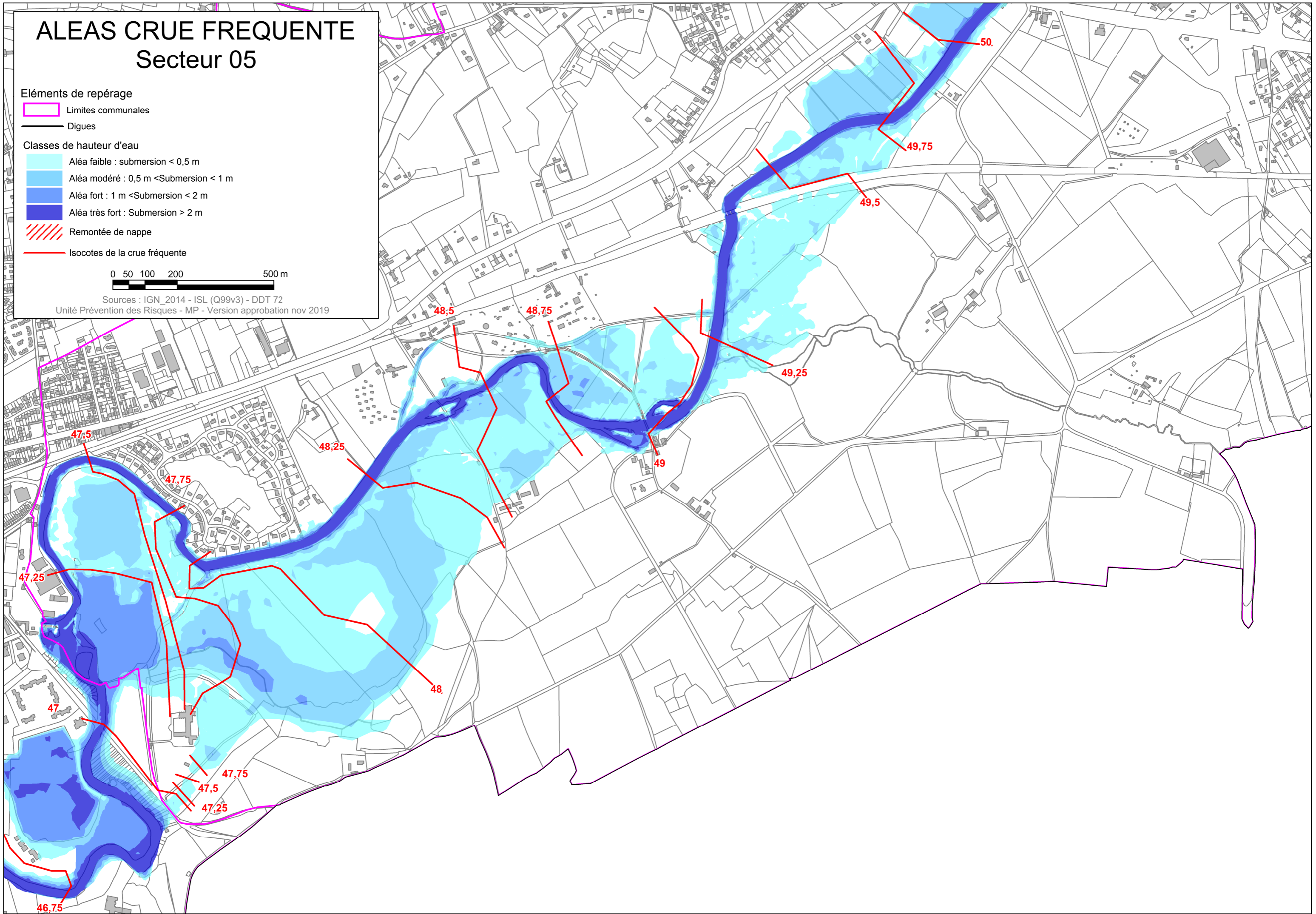
 Aléa très fort : Submersion > 2 m

 Remontée de nappe

 Isocotes de la crue fréquente



Sources : IGN_2014 - ISL (Q99v3) - DDT 72
Unité Prévention des Risques - MP - Version approbation nov 2019




ALEAS CRUE FREQUENTE

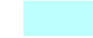
Secteur 06

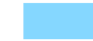
Éléments de repérage

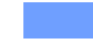
 Limites communales


 Dignes


Classes de hauteur d'eau


 Aléa faible : submersion < 0,5 m

 Aléa modéré : 0,5 m < Submersion < 1 m

 Aléa fort : 1 m < Submersion < 2 m

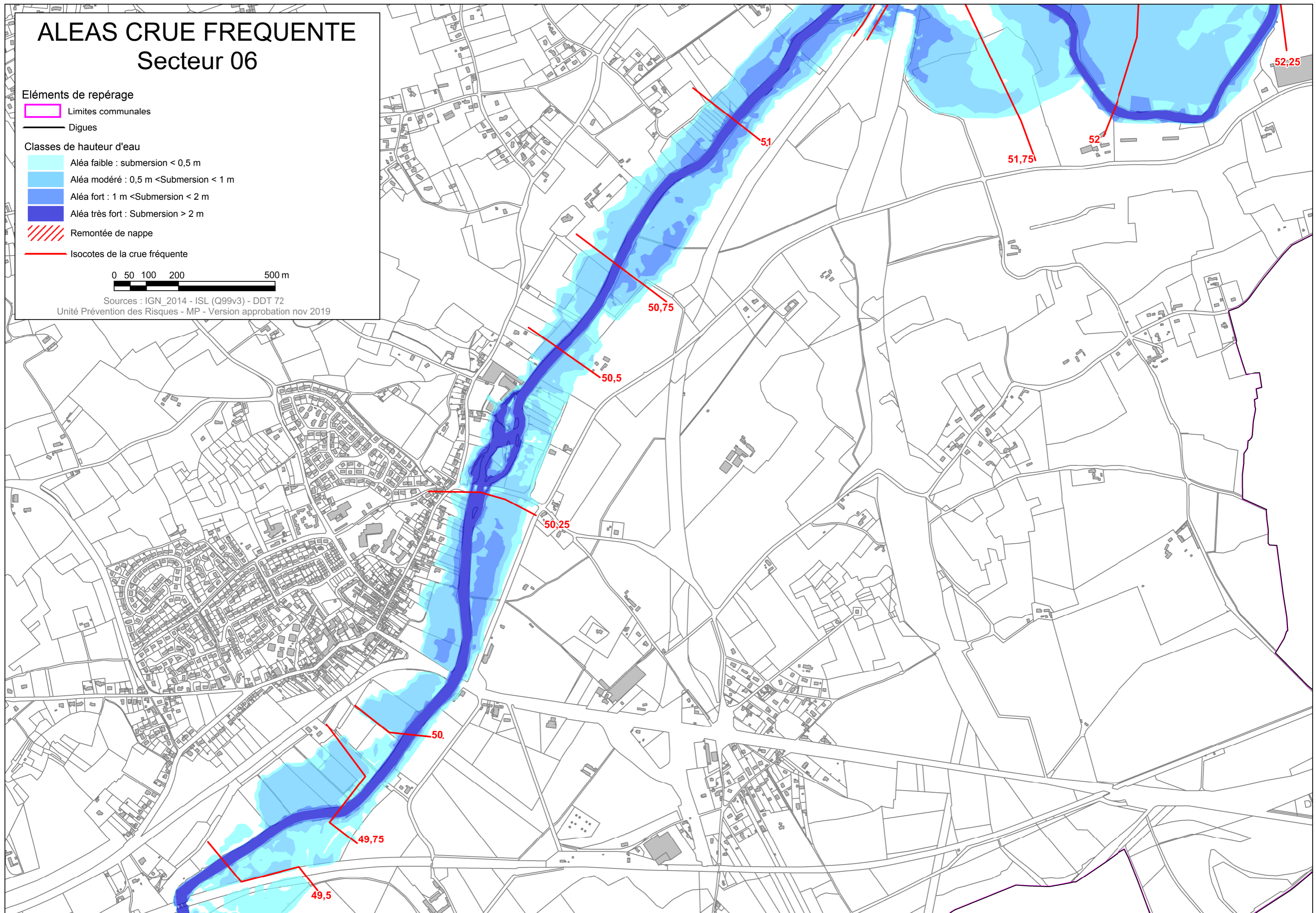
 Aléa très fort : Submersion > 2 m

 Remontée de nappe

 Isocotes de la crue fréquente

0 50 100 200 500 m

Sources : IGN_2014 - ISL (Q99v3) - DDT 72
Unité Prévention des Risques - MP - Version approbation nov 2019



ALEAS CRUE FREQUENTE

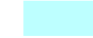
Secteur 07

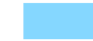
Éléments de repérage


 Limites communales


 Dignes

Classes de hauteur d'eau


 Aléa faible : submersion < 0,5 m

 Aléa modéré : 0,5 m < Submersion < 1 m

 Aléa fort : 1 m < Submersion < 2 m

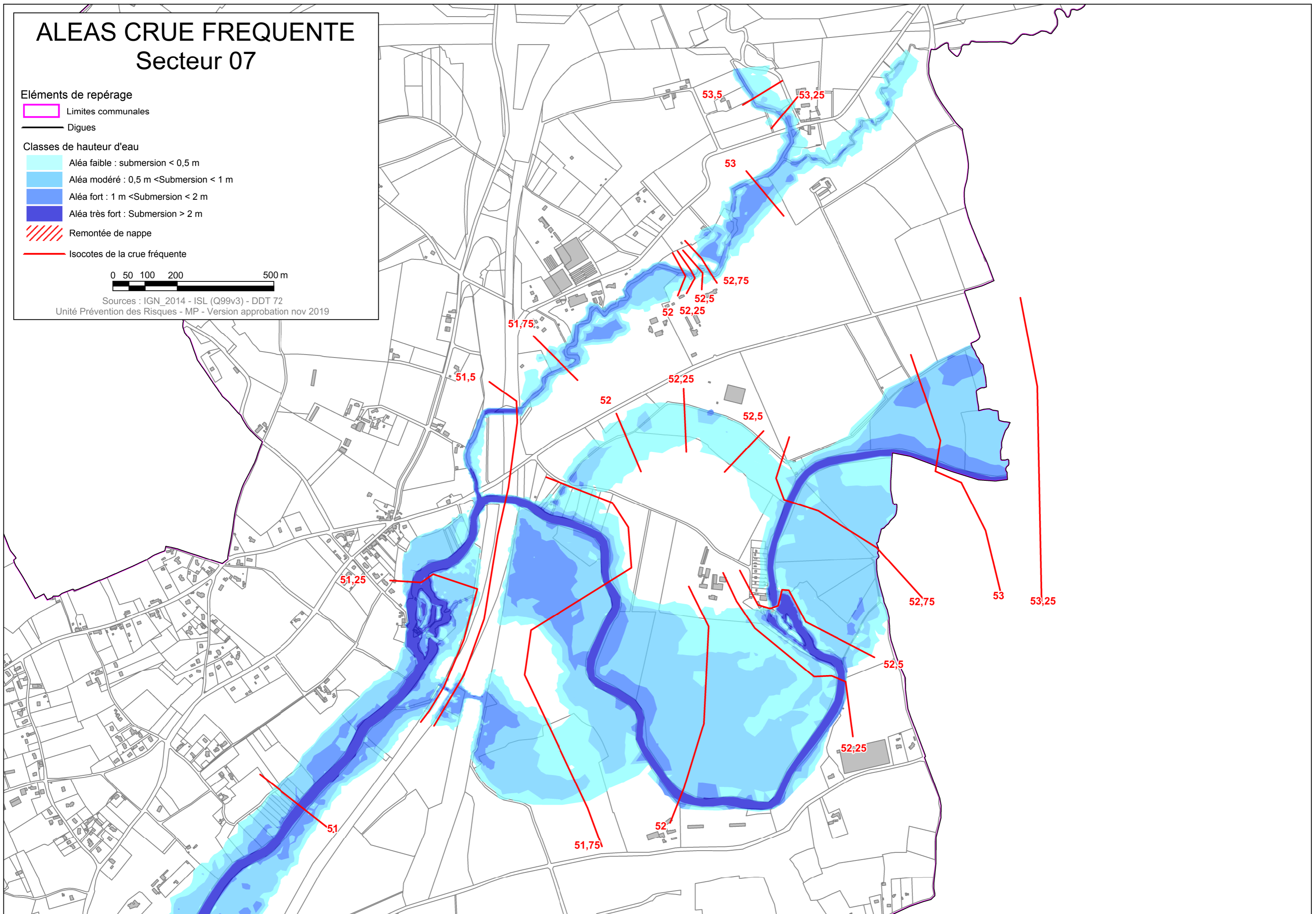
 Aléa très fort : Submersion > 2 m

 Remontée de nappe

 Isocotes de la crue fréquente



Sources : IGN_2014 - ISL (Q99v3) - DDT 72
Unité Prévention des Risques - MP - Version approbation nov 2019




ALEAS CRUE FREQUENTE

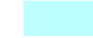
Secteur 08

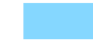
Éléments de repérage


 Limites communales


 Digues

Classes de hauteur d'eau


 Aléa faible : submersion < 0,5 m

 Aléa modéré : 0,5 m < Submersion < 1 m

 Aléa fort : 1 m < Submersion < 2 m

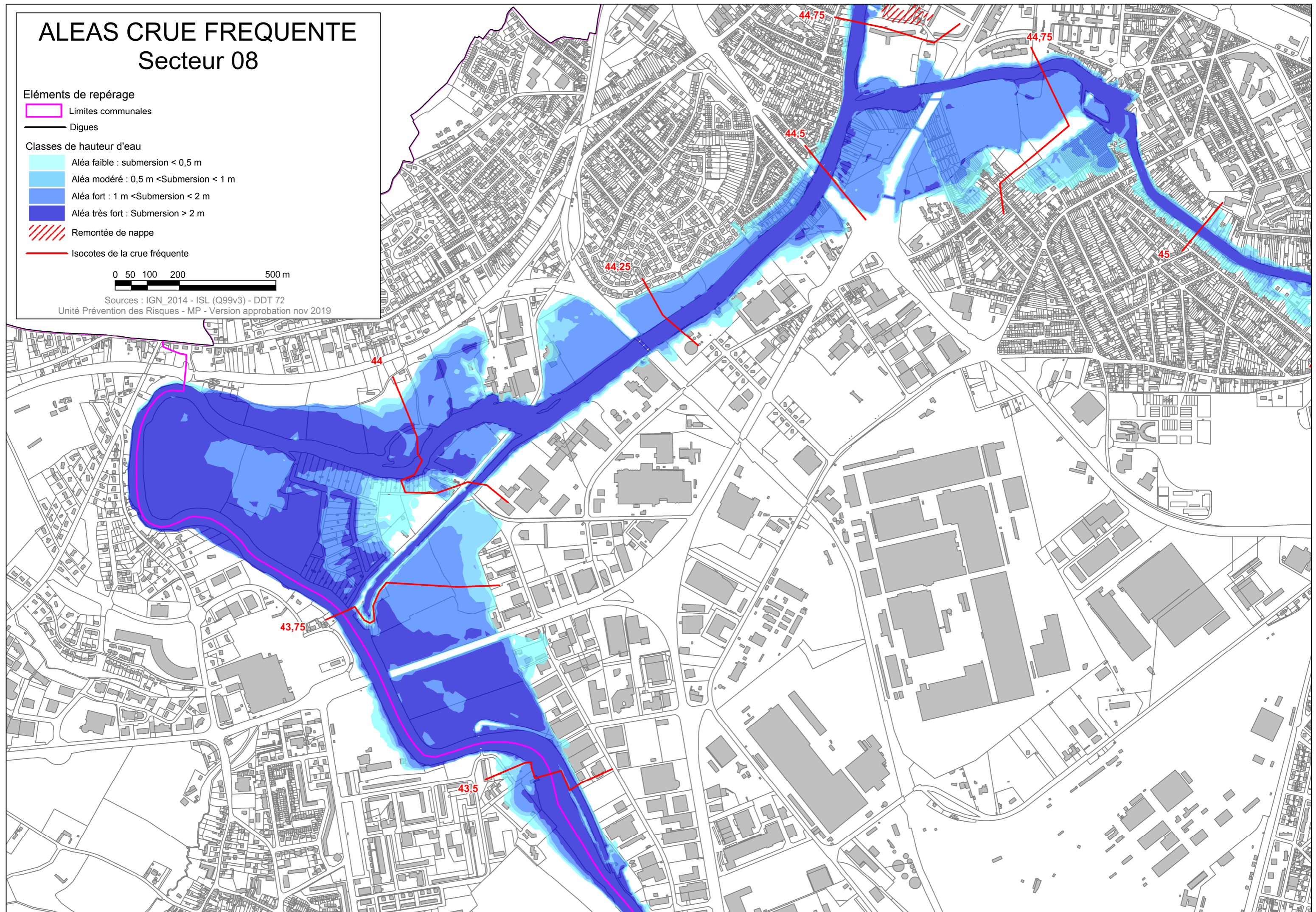
 Aléa très fort : Submersion > 2 m

 Remontée de nappe

 Isocotes de la crue fréquente

0 50 100 200 500 m

Sources : IGN_2014 - ISL (Q99v3) - DDT 72
Unité Prévention des Risques - MP - Version approbation nov 2019



ALEAS CRUE FREQUENTE


Secteur 09

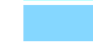
Éléments de repérage

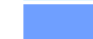
 Limites communales


 Dignes

Classes de hauteur d'eau


 Aléa faible : submersion < 0,5 m

 Aléa modéré : 0,5 m < Submersion < 1 m

 Aléa fort : 1 m < Submersion < 2 m

 Aléa très fort : Submersion > 2 m

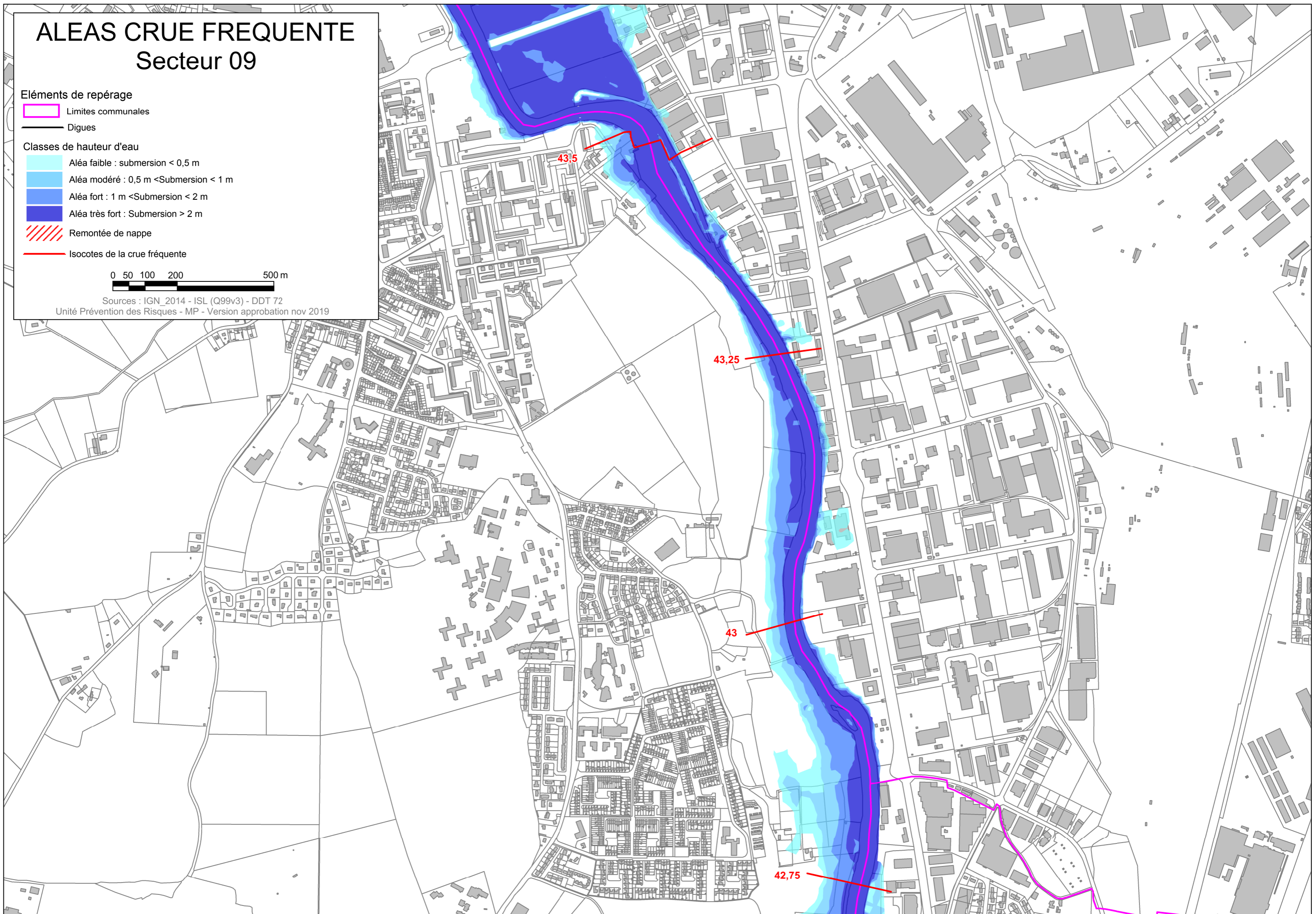
 Remontée de nappe

 Isocotes de la crue fréquente

0 50 100 200 500 m



Sources : IGN_2014 - ISL (Q99v3) - DDT 72

Unité Prévention des Risques - MP - Version approbation nov 2019

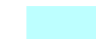







ALEAS CRUE FREQUENTE Secteur 10

Éléments de repérage

-  Limites communales
-  Dignes

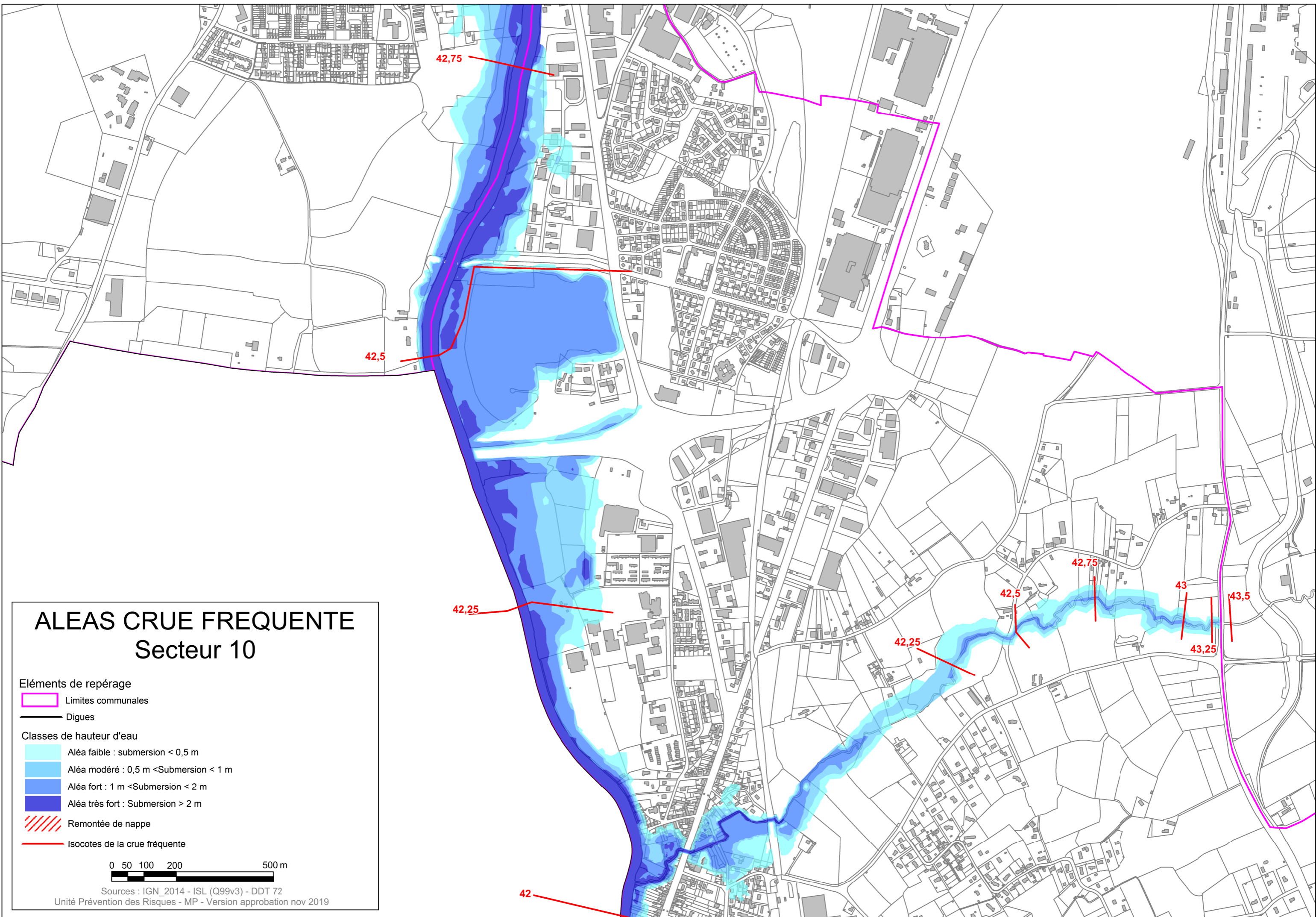
Classes de hauteur d'eau

-  Aléa faible : submersion < 0,5 m
-  Aléa modéré : 0,5 m < Submersion < 1 m
-  Aléa fort : 1 m < Submersion < 2 m
-  Aléa très fort : Submersion > 2 m

-  Remontée de nappe
-  Isocotes de la crue fréquente



Sources : IGN_2014 - ISL (Q99v3) - DDT 72
Unité Prévention des Risques - MP - Version approbation nov 2019



ALEAS CRUE FREQUENTE

Secteur 11

Éléments de repérage

- Limites communales
- Dignes

Classes de hauteur d'eau

- Aléa faible : submersion < 0,5 m
- Aléa modéré : 0,5 m < Submersion < 1 m
- Aléa fort : 1 m < Submersion < 2 m
- Aléa très fort : Submersion > 2 m

- Remontée de nappe
- Isocotes de la crue fréquente

0 50 100 200 500 m

Sources : IGN_2014 - ISL (Q99v3) - DDT 72
Unité Prévention des Risques - MP - Version approbation nov 2019

41,5

41,75

42

